

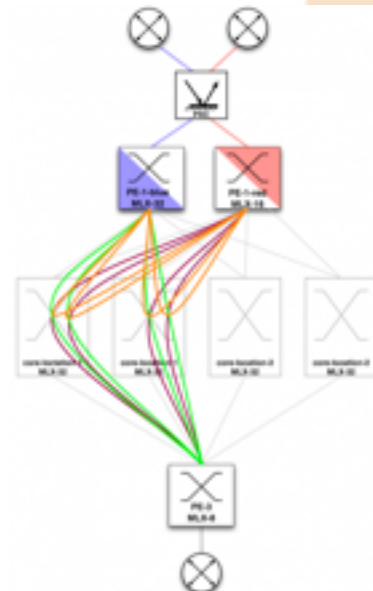
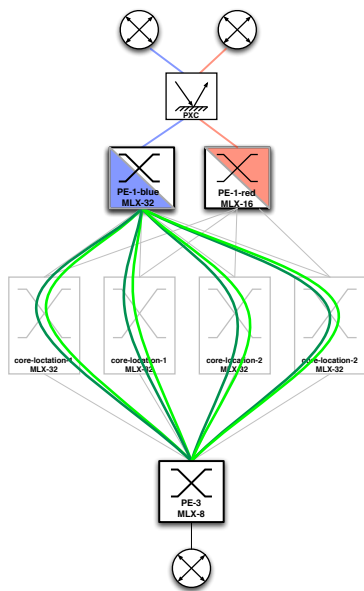
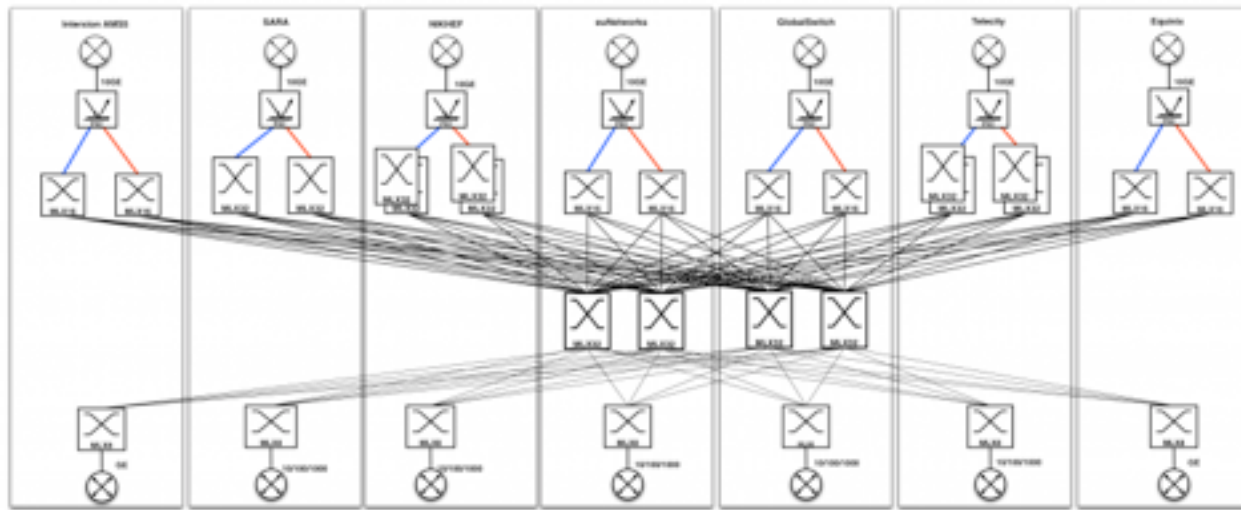


AMS-IX Generation 4

GPF5 - Caribbean Sea - 14 April 2010

Gen 4 Topology

- Layer 1 over 7 sites
 - fully meshed
 - redundant optical infrastructure
- MPLS /VPLS
 - LSP's & load distribution
- Customer connections
 - GE
 - 10GE - through optical switch



Gen 4 services

- Reseller port

- 10GE allowing multiple MAC
 - Identification on VLAN basis

- resell price model

- available to registered partners

- Under development

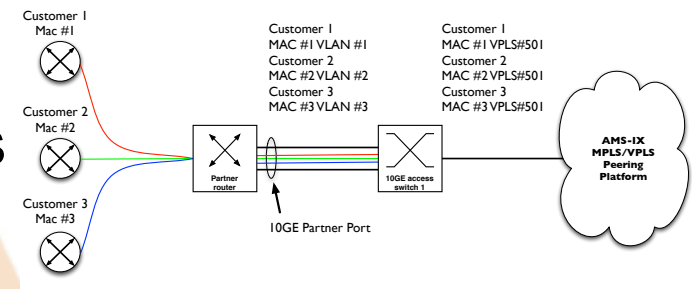
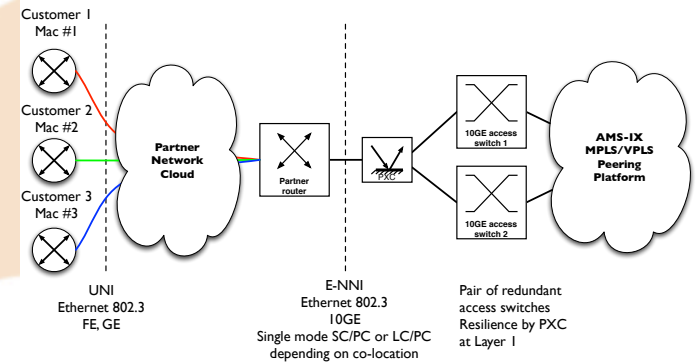
- New Service Level Reporting (SLA, \$+ ?)

- Inter-IPX with SLA

- Inter-site PI's (Private VPLS instances/VLL/10Gig waves?)

- TTP services (a.o. video-WG)

- Many other ideas - input/feedback welcome!



Other new stuff

- Route-servers
 - Redundant OpenBGPd and stable
 - One extra on BIRD - May '10
 - Peering policy compliant (IRRdb filtering)
- Active DWDM deployment
 - Selected MRV as supplier
- Re-launch of AMS-IX Partner Program
 - New Contracts, easier admin, real margin, Reseller port
 - New Partner manager
- Datacenters
 - AMS-IX Datacenter standard - available online
 - Satellite site Telecity4 (from TC2 switch) - June '10
 - Full deployment Terremark AMS (if compliant)
- Price decrease
 - 10GE to 1750 Euros a month per 1/7/'10